

2018 Peterbilt 367

\$70,000

Out The Door Pricing

Base Price:	\$70,000.00
Doc Fee:	\$50.00
Plate MR:	\$1,128.00
IL Sales Tax (6.25%):	\$4,448.63
Total:	\$75,626.63



Year/Make/Model	2018 Peterbilt 367	Tank Cap.	Single 100 gal
Engine	Paccar MX-13 12.9 L 455HP @ 1600 RPM	Tires	Steer 315/80R22.5 Drive 11R22.5
Mileage	301,932 mi. 13,738 Eng Hrs	Wheels	All Aluminum
Serial Number	1XPTDP9X8JD465385	Engine Brake	YES
Transmission	Eaton Fuller Automated FAO-16810C -EA3 10 Spd	Front/Rear Axle Cap.	13,200 lbs 40,000 lbs
Rear End Ratio	3.70	Cab to Trunnion	150"
Suspension	Air Trac Air Ride	DEF	YES

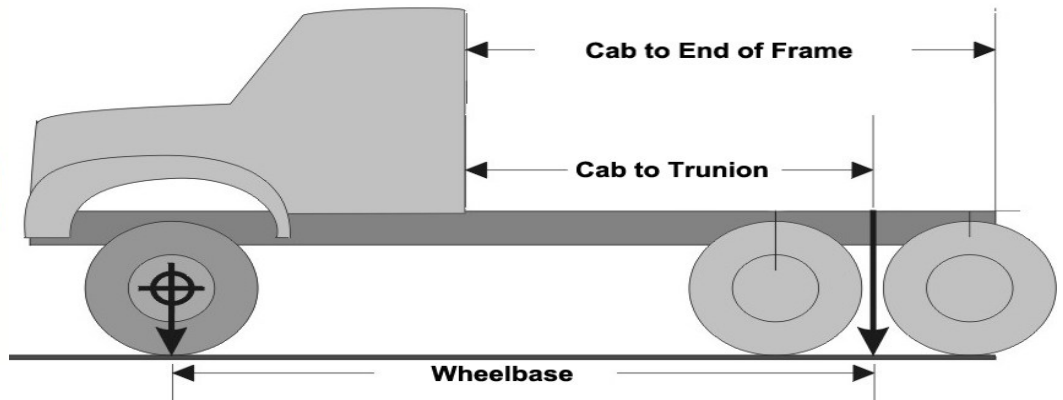
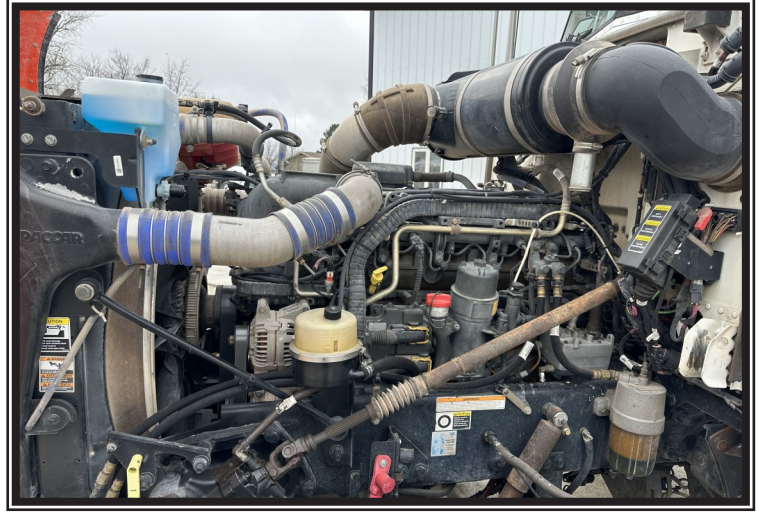
U1586

TSC Truck, Inc.
1020 N Center
Forrest, IL 61741



Office: (815) 657-8400
Fax: (815) 657-7387
sales@tsctruck.com
www.TSCTRUCK.com

All TSC Trucks go through a rigorous inspection process by ASC Certified Mechanics



The Fertilizer distribution industry has found a partner in TSC truck, Inc. More than just a vender, we pride ourselves on knowing what you need and dedicate ourselves to providing the right trucks to keep you ahead of the game and under budget. If this isn't the truck you need, make sure you talk to one of our salesmen and find out how TSC can help you find the truck that gets you to that next level.