

# 2010 Kenworth T660

# **\$35,000**

Out The Door Pricing

Base Price:	<b>\$35,000.00</b>
Doc Fee:	<b>\$50.00</b>
Plate MR:	<b>\$1,118.00</b>
IL Sales Tax(6.25%):	<b>\$2,260.50</b>
<b>Total:</b>	<b>\$38,428.50</b>



Make	Kenworth	Front axle	12,000 lbs.
Model	T660	Rear Axles will be	40,000 lbs.
Year	2010	Wheels	All Steel Disc
Engine	Cummins ISX 400 HP	Tire Size	LP 22.5
Mileage	683,735 mi.	Tank Cap.	Left 75 Gal Right 120 Gal
Serial Number	1XKAA48X7AJ266805	Engine Brake	Yes
Transmission	10 Spd. Eaton Fuller FRM15210B	Wheel Base	240"
Rear End Ratio	3.90	Cab to Trunnion	155"
Suspension	Air Ride	Cab to End of Frame	209"

## U1488

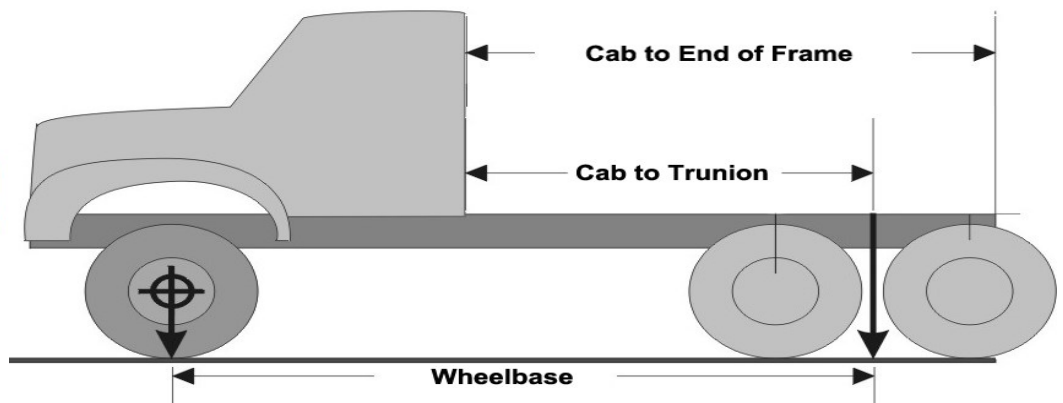
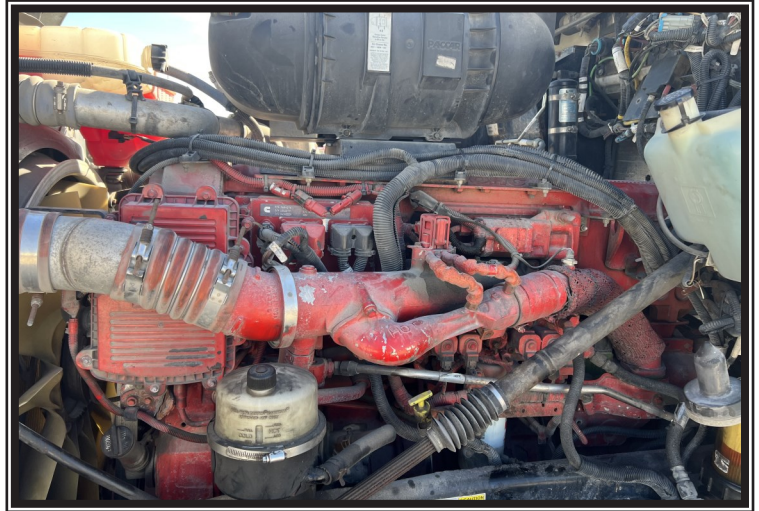
TSC Truck, Inc.  
1020 N Center  
Forrest, IL 61741



Office: (815) 657-8400  
Fax: (815) 657-7387  
sales@tsctruck.com  
www.TSCTRUCK.com



# All TSC Trucks go through a rigorous inspection process by ASC Certified Mechanics



The Fertilizer distribution industry has found a partner in TSC truck, Inc. More than just a vender, we pride ourselves on knowing what you need and dedicate ourselves to providing the right trucks to keep you ahead of the game and under budget. If this isn't the truck you need, make sure you talk to one of our salesmen and find out how TSC can help you find the truck that gets you to that next level.