

2014 FREIGHTLINER CA125DC

\$55,000

Out The Door Pricing

Base Price: **\$55,000.00**

Doc Fee: **\$50.00**

Plate VZ: **\$1,745.00**

IL Sales Tax(6.25%): **\$3,549.69**

Total: \$60,344.69



Year/Make/Model	2014 Freightliner CA125DC	Tank Cap.	Dual Fuel Tanks
Engine	Cummins ISX	Front Axle Cap.	12,000 lb
Horsepower	425 HP	Rear Axle Cap.	40,000 lb
Serial Number	3AKJGEBG0ESFV5608	Wheels	All Steel
Mileage	393,554 mi.	Tire Size	295/75R22.5
Transmission	Eaton Fuller 10 Spd	Engine Brake	Yes
Rear End Ratio	3.58	Wheel Base	190"
Suspension	Air Ride	Power Steering	Yes
Air Conditioning	Yes	DEF	Yes

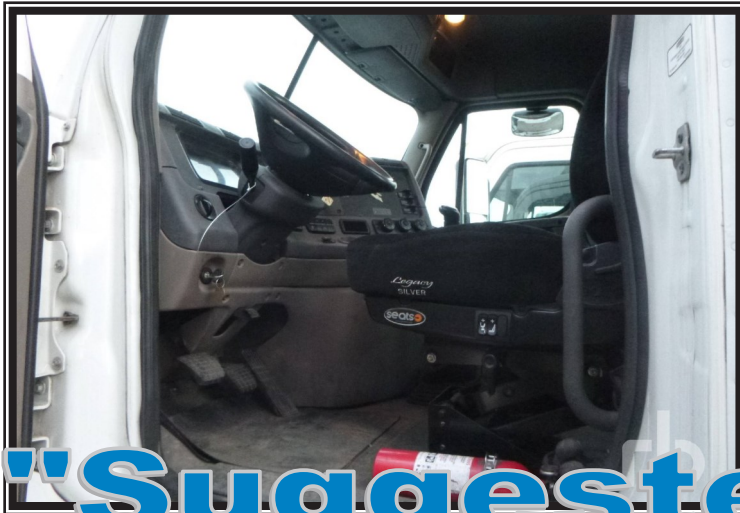
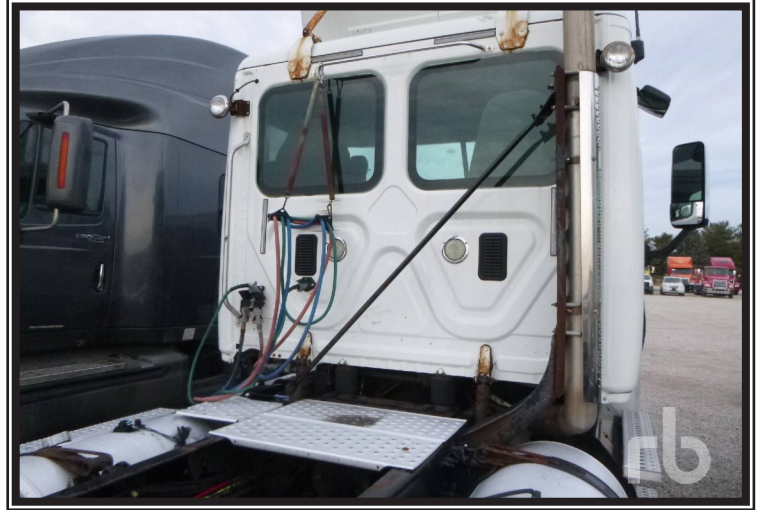
U1505

TSC Truck, Inc.
1020 N Center
Forrest, IL 61741



Office: (815) 657-8400
sales@tsctruck.com
www.TSCTRUCK.com

All TSC Trucks go through a rigorous inspection process by ASC Certified Mechanics



"Suggested Pulling"

38' Steel

Empty Weight:	10,700 lbs
Heaped Bushel	1100



Base Price: **\$34,865.00**
 FET(12%): **\$4,183.80**
 Freight: **\$1,600.00**
 IL Sales Tax(6.25%): **\$2,540.55**
Total: \$43,189.35
Leasing and Payment Plans Availabl

40' Steel

Empty Weight:	11,000 lbs
Level Bushel	1120



Base Price: **\$34,955.00**
 FET(12%): **\$4,194.60**
 Freight: **\$1,600.00**
 IL Sales Tax(6.25%): **\$2,546.85**
Total: \$43,296.45
Leasing and Payment Plans Availabl

40' Timpfe Alum.

Bushels (Heaped)	1150
---------------------	------



Base Price **\$52,775.00**
 Freight: **\$1,600.00**
 FET(12%): ***Paid By Timpfe***
 IL Sales Tax(6.25%): **\$3,398.44**
Total: \$57,773.44
Leasing and Payment Plans Available