

# 2014 Kenworth T800

# **\$50,000**

Out The Door Pricing

Base Price: **\$50,000.00**  
 Doc Fee: **\$50.00**  
 Plate MR: **\$1,118.00**  
 IL Sales Tax(6.25%): **\$3,198.00**  
**Total: \$54,366.00**

**Has 100% PTO**  
 Will need upgraded for a tender.



Year/Make/Model	2014 Kenworth T800	Weight Capacity	46,000 lb Rear 12,000 Steer
Engine	Cummins ISX 15.0 485 HP	Wheels	Steel
Mileage	492,632	Tire Size	11R22.5
Serial Number	1XKDD40X2EJ397503	Engine Brake	
Transmission	13 Spd Manual	Wheel Base	240"
Rear End Ratio	4.10	Cab to Trunnion	164"
Suspension	Air Ride	Cab to End of Frame	220"
Tank Cap.	120 Gal	DEF	Yes

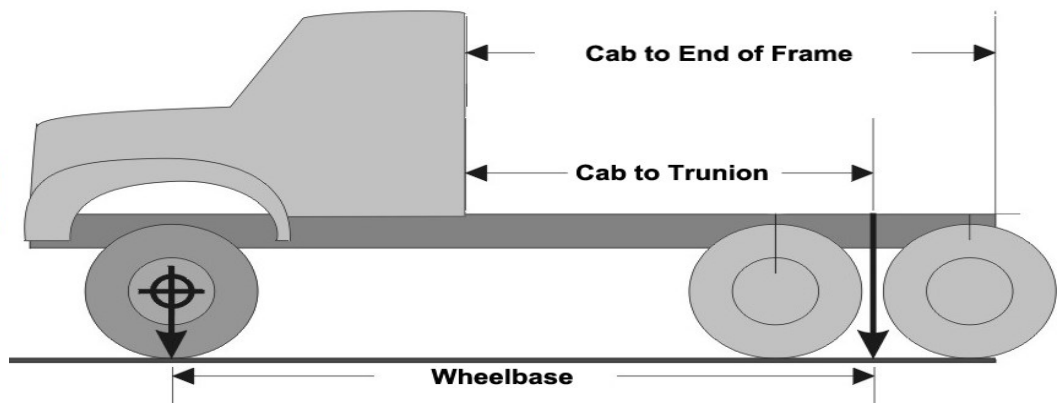
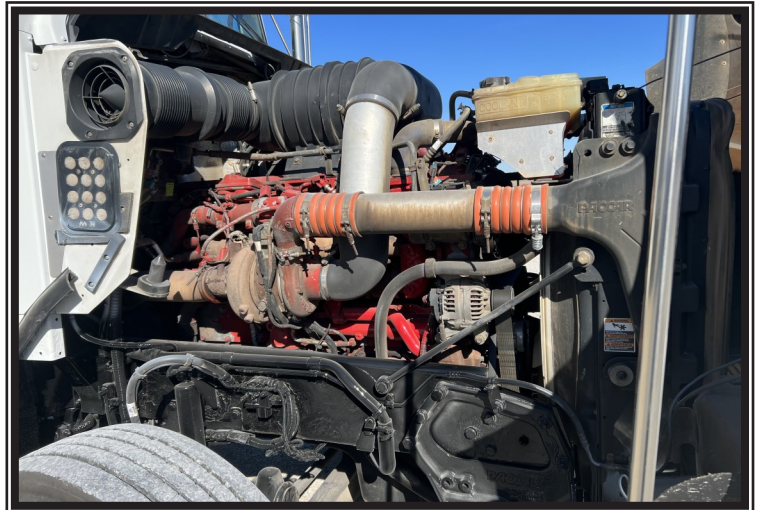
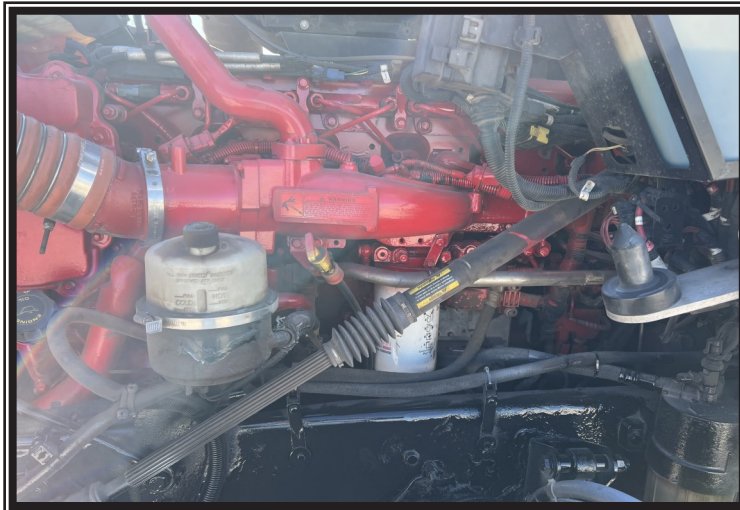
# U1532

TSC Truck, Inc.  
 1020 N Center  
 Forrest, IL 61741



Office: (815) 657-8400  
 Fax: (815) 657-7387  
 sales@tsctruck.com  
 www.TSCTRUCK.com

# All TSC Trucks go through a rigorous inspection process by ASC Certified Mechanics



The Fertilizer distribution industry has found a partner in TSC truck, Inc. More than just a vender, we pride ourselves on knowing what you need and dedicate ourselves to providing the right trucks to keep you ahead of the game and under budget. If this isn't the truck you need, make sure you talk to one of our salesmen and find out how TSC can help you find the truck that gets you to that next level.